

A. GENERAL NOTES:

1. ALL DIMENSION ARE IN MM UNLESS OR OTHERWISE SPECIFIED
2. ALL EXTERNAL PLASTER ARE IN 18 MM TH AND INTERNAL PLASTER ARE 12 MM TH
3. ALL EXTERNAL WALL'S ARE 200 MM TH AND INTERNAL WALL'S ARE 100 MM TH OR OTHERWISE MENTIONED.
4. ALL ELECTRICAL AND PLUMBING WORKS ARE CONSIDERED AS PER I.S. CODE

B. STRUCTURAL NOTE:

1. ALL DIMENSION ARE IN MM UNLESS OR OTHERWISE SPECIFIED
2. DIMENSION TO READ ONLY, NOT TO BE SCALED
3. THIS DRAWING SHALL BE READ IN CONJUNCTION WITH RELEVANT ARCHITECTURAL DRGS.
4. FOR LOCATION OF THE BUILDING REFER ARCH. BLOCK LAYOUT PLAN
5. F.G.L SHALL BE FIXED AT SITE AS PER SITE DECISION AND SHALL BE CONSIDERED AS (+)0.00M.
6. BEARING CAPACITY OF SOIL = (+)0.00M.
7. GRADE OF
 - a) CONCRETE = M-25, DESIGN MIX (U.O.M)
 - b) STEEL = Fe500.
 - c) CEMENT = EQUIVALENT TO 53.
8. CLEAR COVER TO REINF
 - a) FOUNDATION AND FOUNDATION BEAM = 50MM
 - b) COLUMN = 40 MM
 - c) TIE BEAM = 30 MM
 - d) STAIR = 25 MM
 - e) SLAB TOP AND BOTTOM = 20MM AND END = 25MM
 - f) FLOOR BEAM = 25 MM
9. ANTI TERMITE TREATMENT SHALL BE DONE AS PER RELEVANT I.S. CODES.
10. 50 TH D.P.C (1:1:2) WITH WATER PROOFING ADMIXTURE SHALL BE PROVIDED AT PLINTH LEVEL OVER ALL BRICK WORK BELOW PLINTH LEVEL.
11. CHAIR SHALL BE PROVIDED BETWEEN TWO LAYERS OF SLAB REINFORCEMENT WHEREVER REQUIRED.
12. SPACE BAR OF SUITABLE DIA SHALL BE PROVIDED BETWEEN TWO LAYERS OF BEAM REINFORCEMENT WHEREVER REQUIRED.
13. ALL CONCRETE SHALL BE MIXED BY MIXER MIC AND SHALL BE COMPACTED BY MECHANICAL VIBRATOR.
14. ANY DISCREPANCY OF THE CONSULTANT PRIOR TO EXECUTION.
15. FOR ANY OTHER GUIDELINE NOT STATED IN THIS DRAWING RELEVANT I.S. CODED ARE NOT TO BE FOLLOWED.

C. AREA CALCULATION:

1. PLOT AREA = 2 NOS
CV11-181.95 SQM
CV12-199.33 SQM
2. GROUND FLOOR AREA = 79.72 SQM
3. FIRST FLOOR AREA = 46.05 SQM
4. OPEN TERRACE AREA (100%) = 15.92 SQM
5. JULIET BALCONY AREA (100%) = 1.85 SQM
6. TOTAL AREA = 150.07 SQM
7. HARDSCAPE AREA = 20.31 SQM
8. HEIGHT OF BUILDING = 6.0 METER.
9. CAR PARKING PROVIDED = 1 NO.

D. SIGNATURE OF OWNER:

Signature of Owner: _____
 Signature of Owner: _____
 Signature of Owner: _____

E. SIGNATURE OF ENGINEER:

Signature of Engineer: _____
 Signature of Engineer: _____
 Signature of Engineer: _____

F. PROJECT:

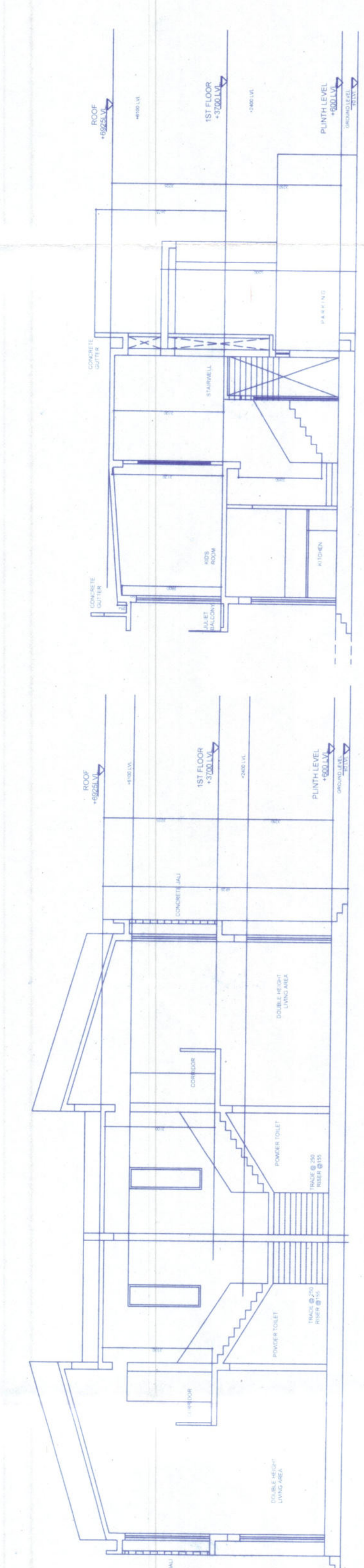
PROPOSED TYPICAL G+1 BUNGALOW FOR RESIDENTIAL COMPLEX AT PLOT NO CV-11&12, DAGNO-1959&1959/27, 660, MOUZA - RAMKRISHNAPUR, P. S - BISHUNUPUR, DIST - SOUTH 24 P. G. S, WEST BENGAL.

G. SANCTION DRAWING:

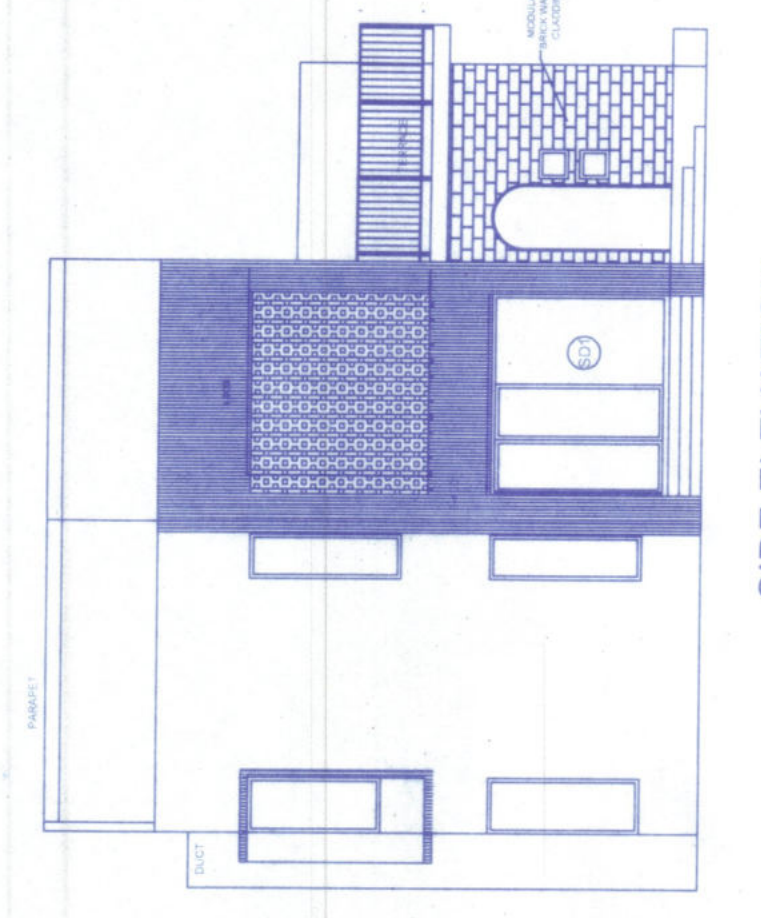
SITE PLAN, FLOOR'S PLAN, ROOF PLAN, ELEVATION, SECTION, LOCATION DETAILS OF SEPTIC TANK AND STRUCTURAL DETAILS OF PLOT NO CV-11&12.

Approved By: _____

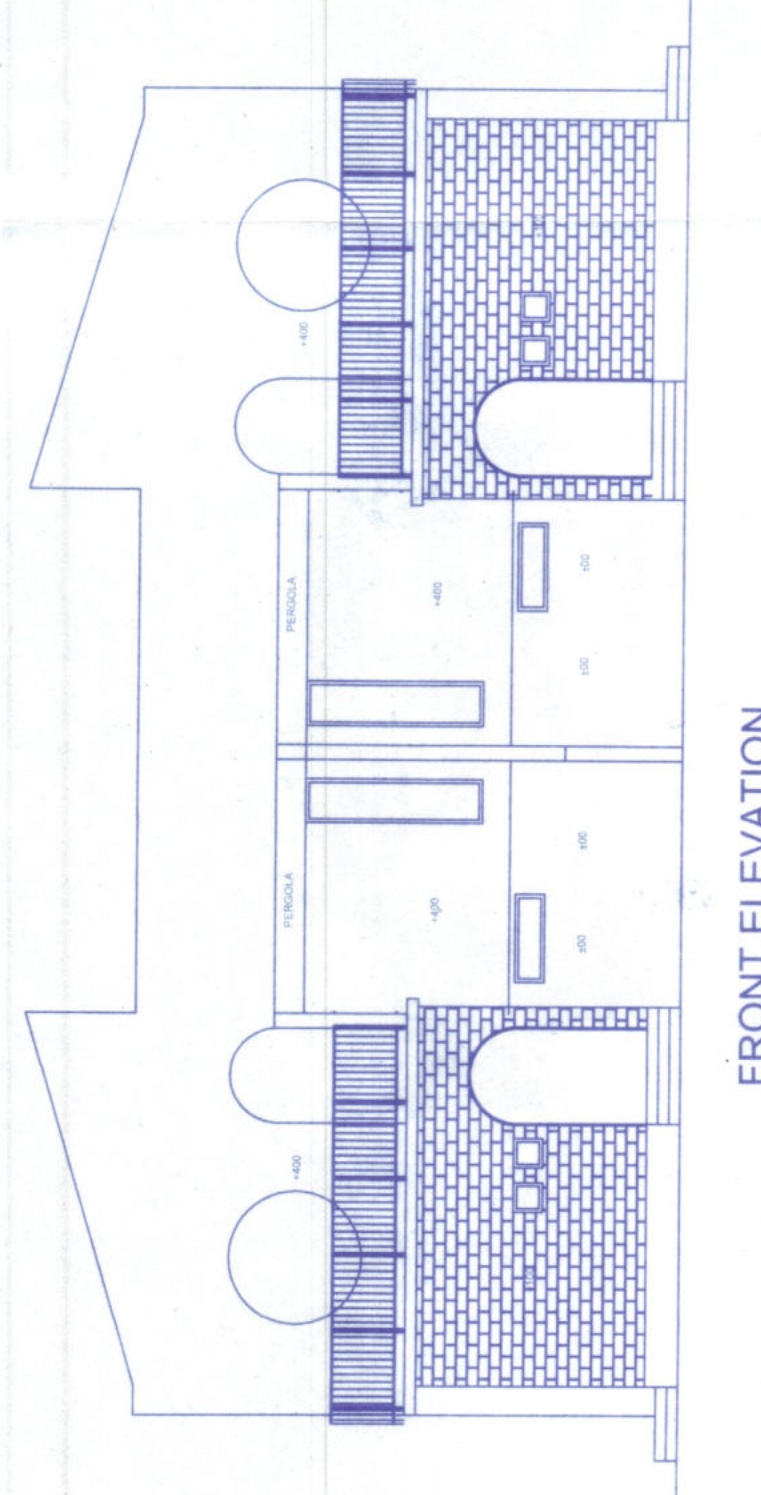
Signature of Engineer: _____
 Signature of Engineer: _____
 Signature of Engineer: _____



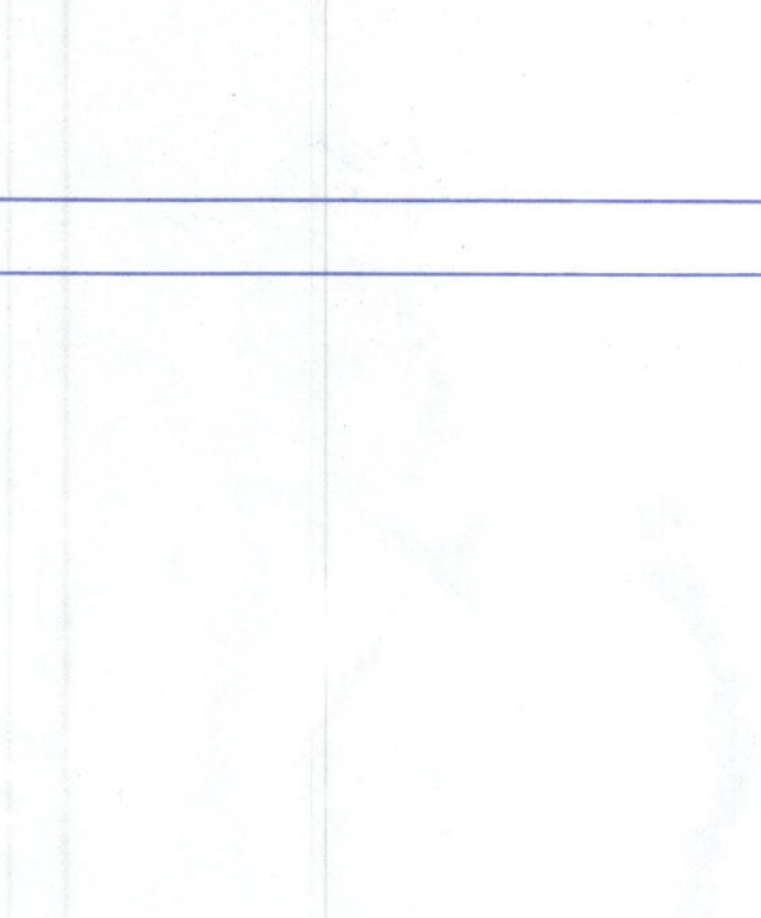
FRONT ELEVATION



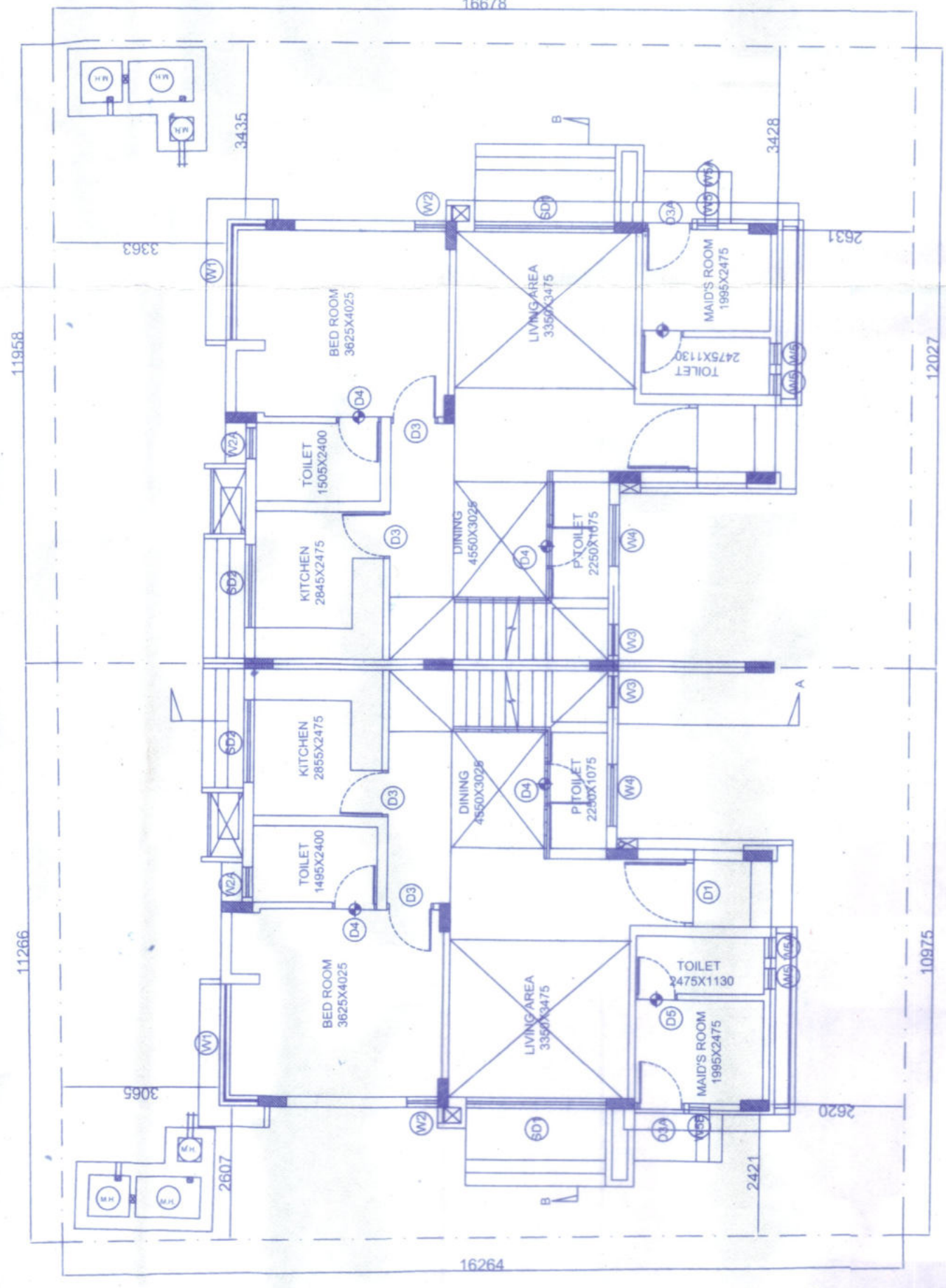
SIDE ELEVATION



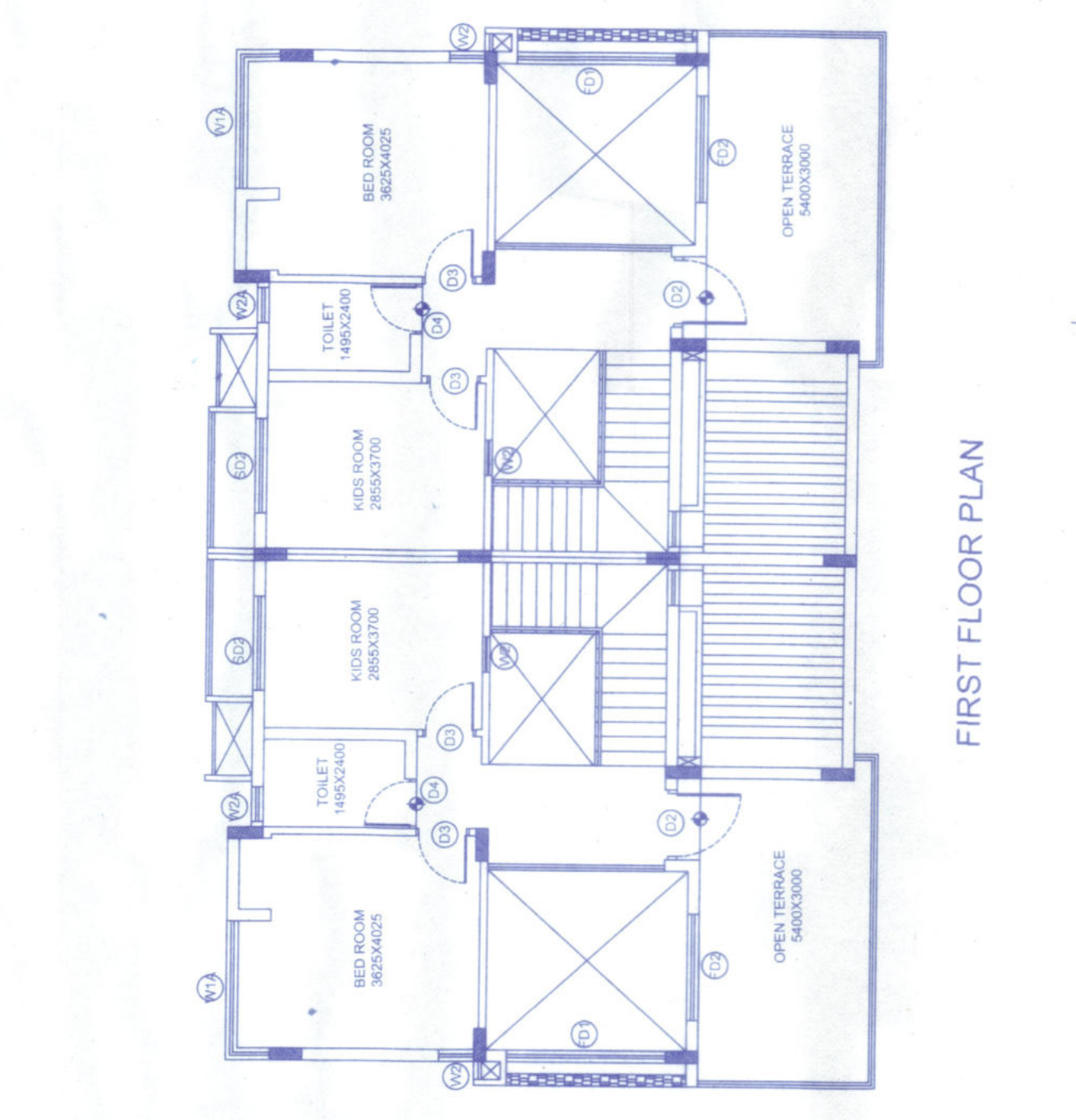
SECTION AA



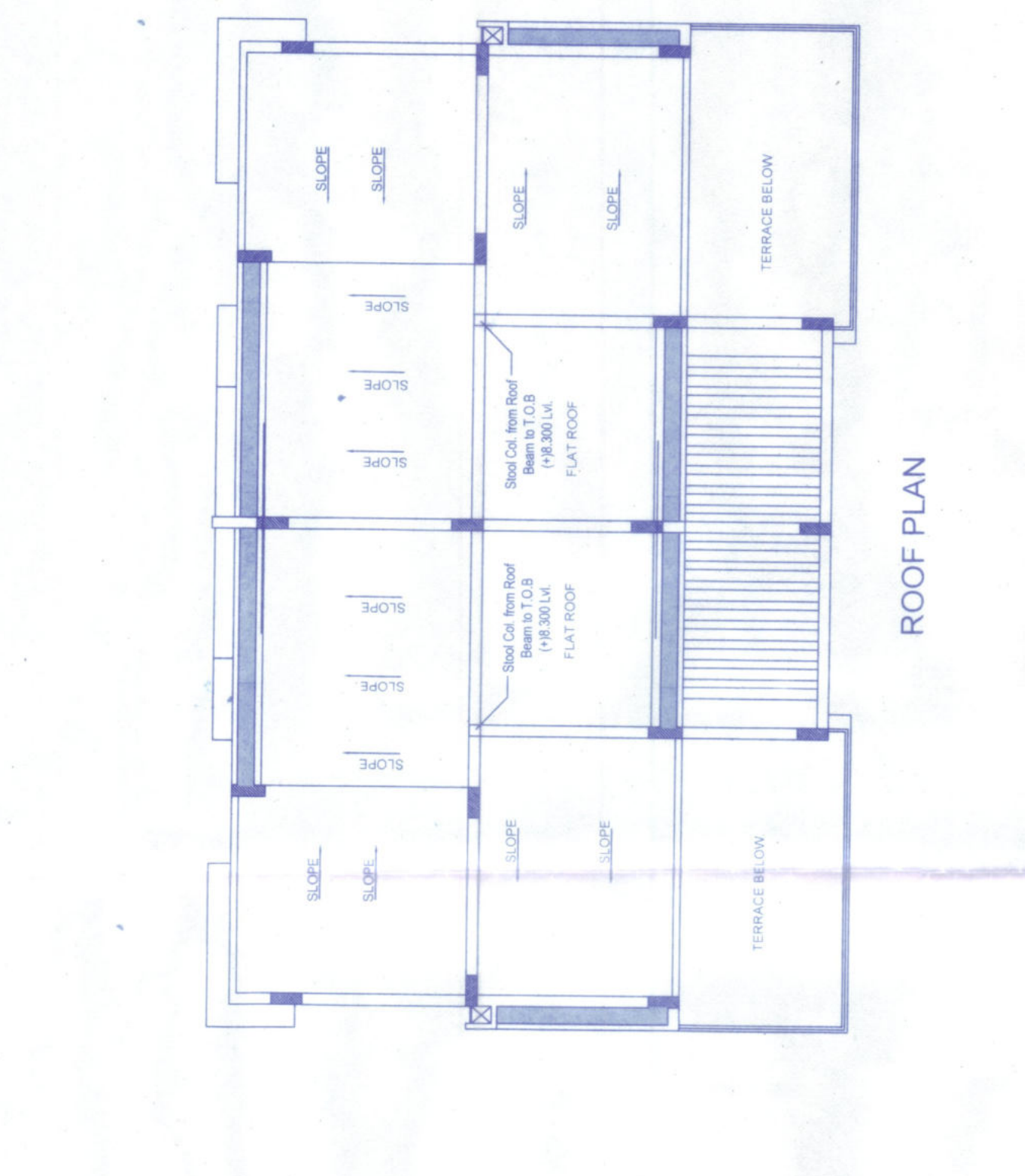
SECTION BB



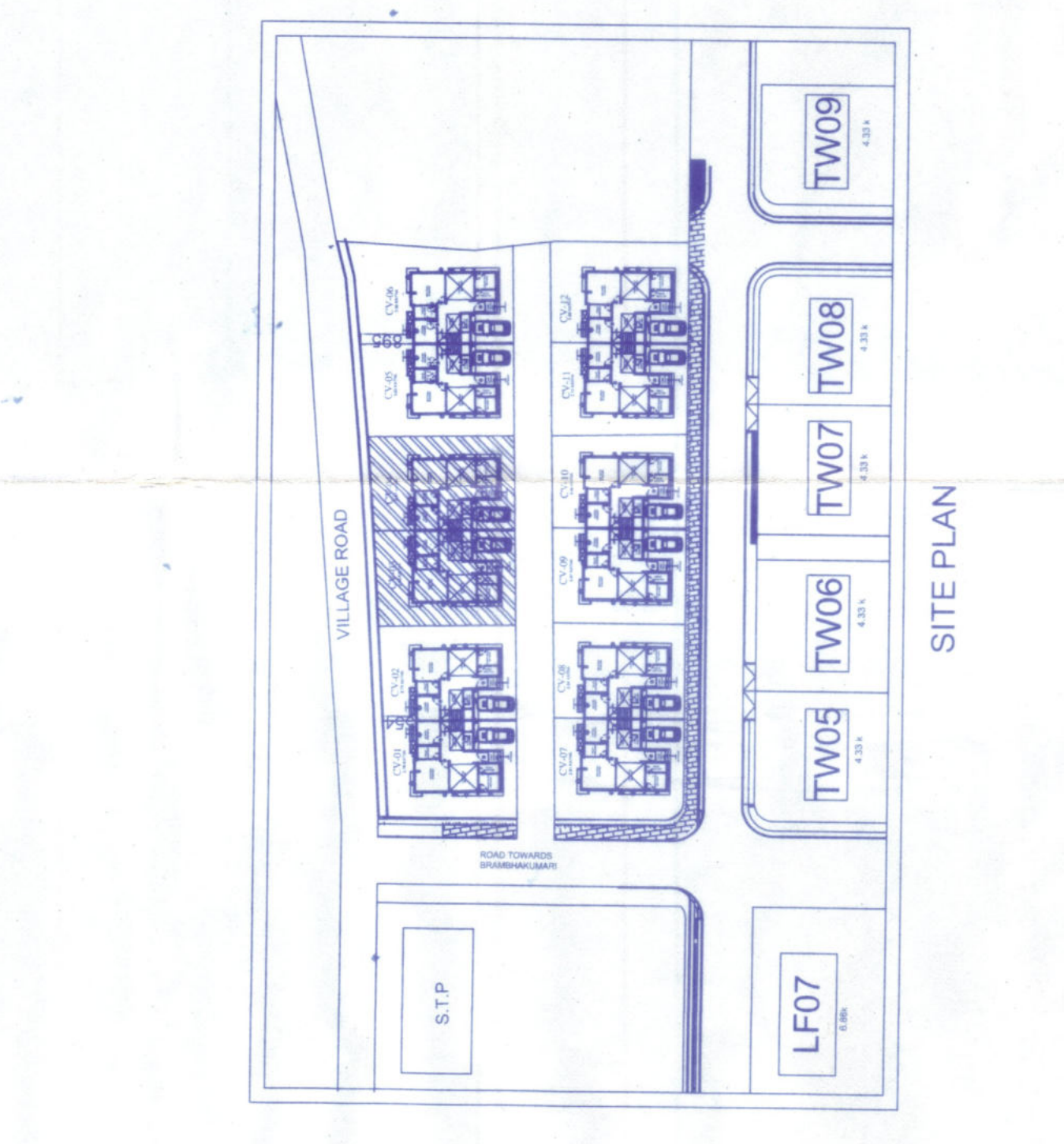
GROUND FLOOR PLAN



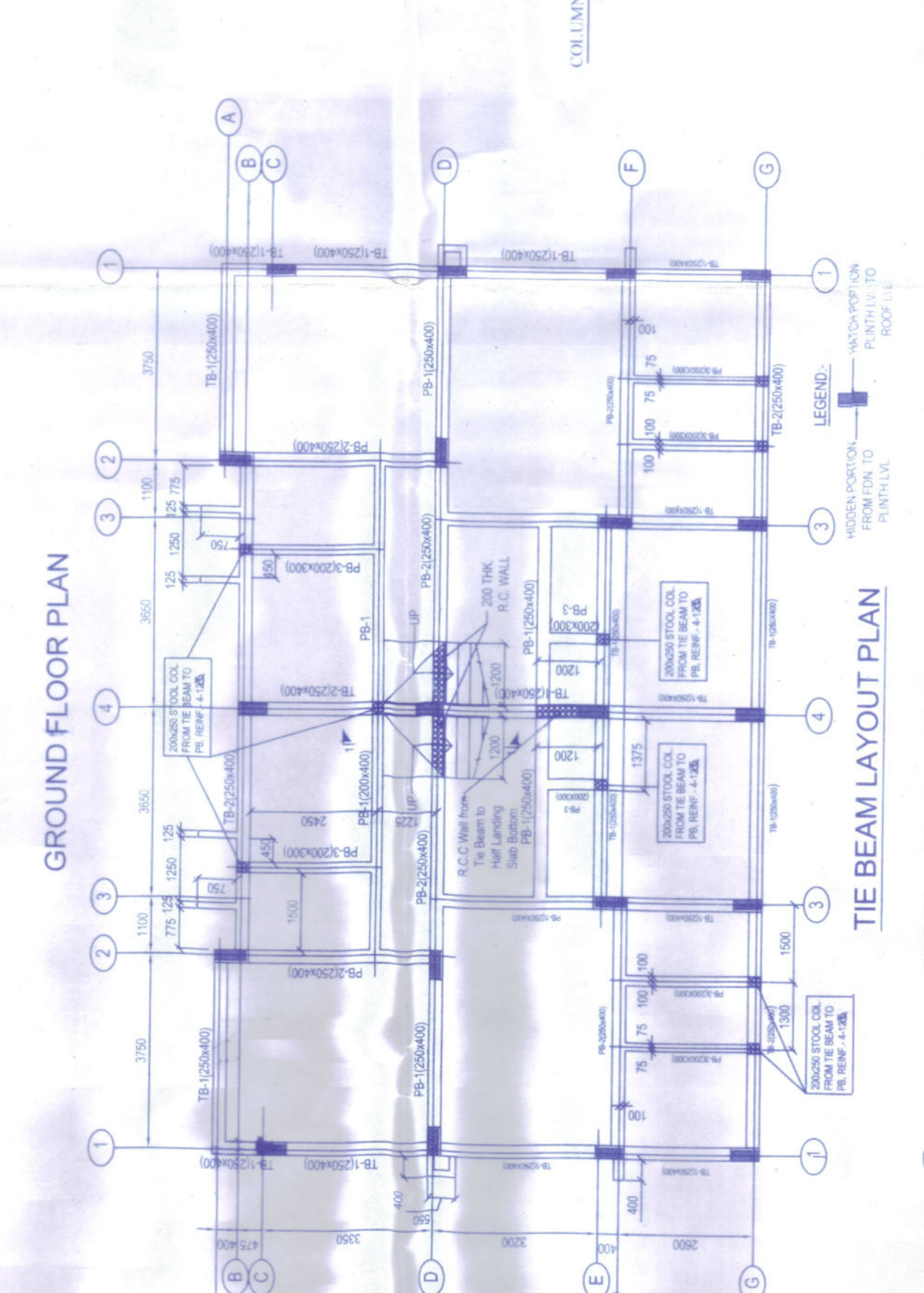
FIRST FLOOR PLAN



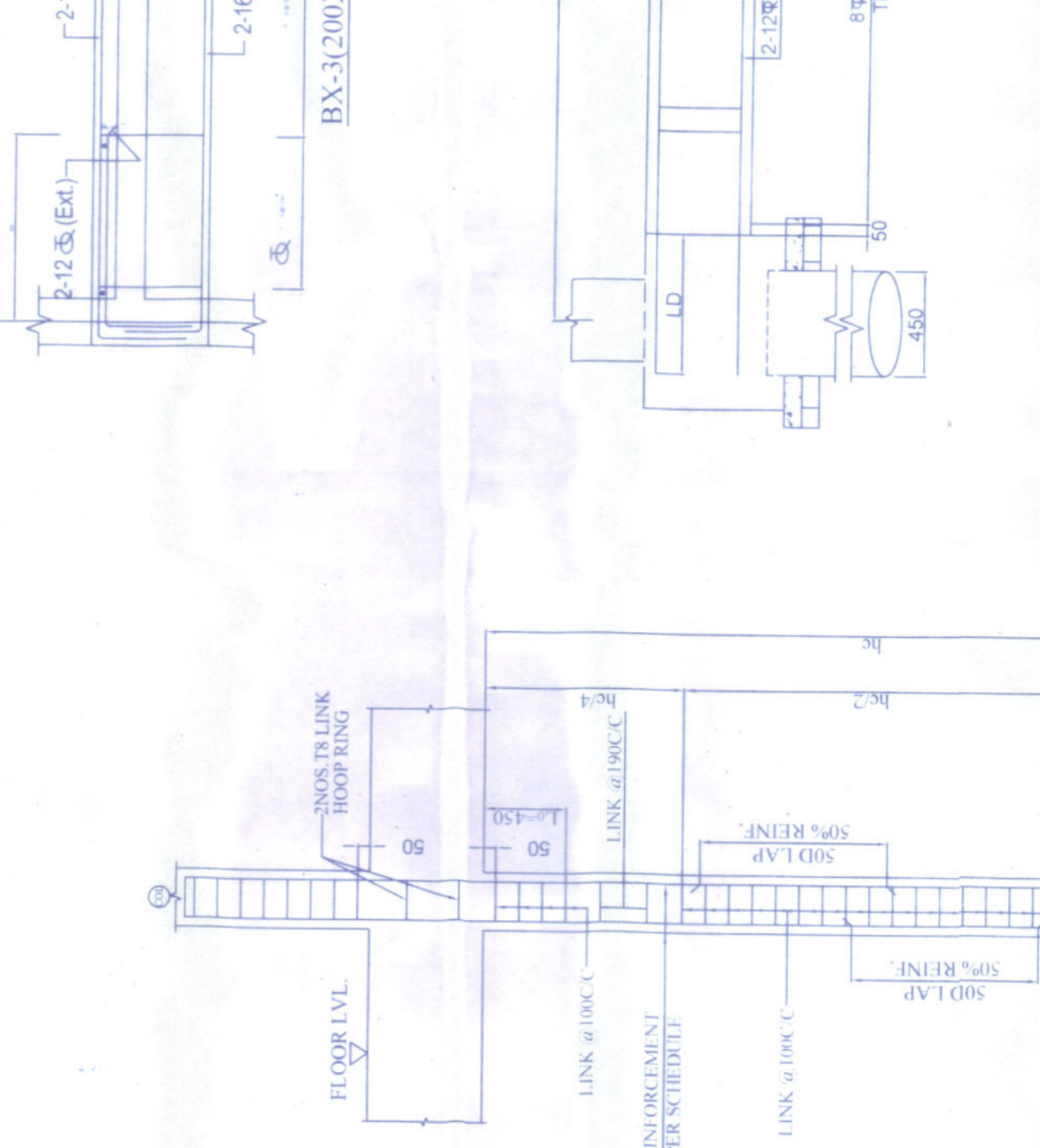
ROOF PLAN



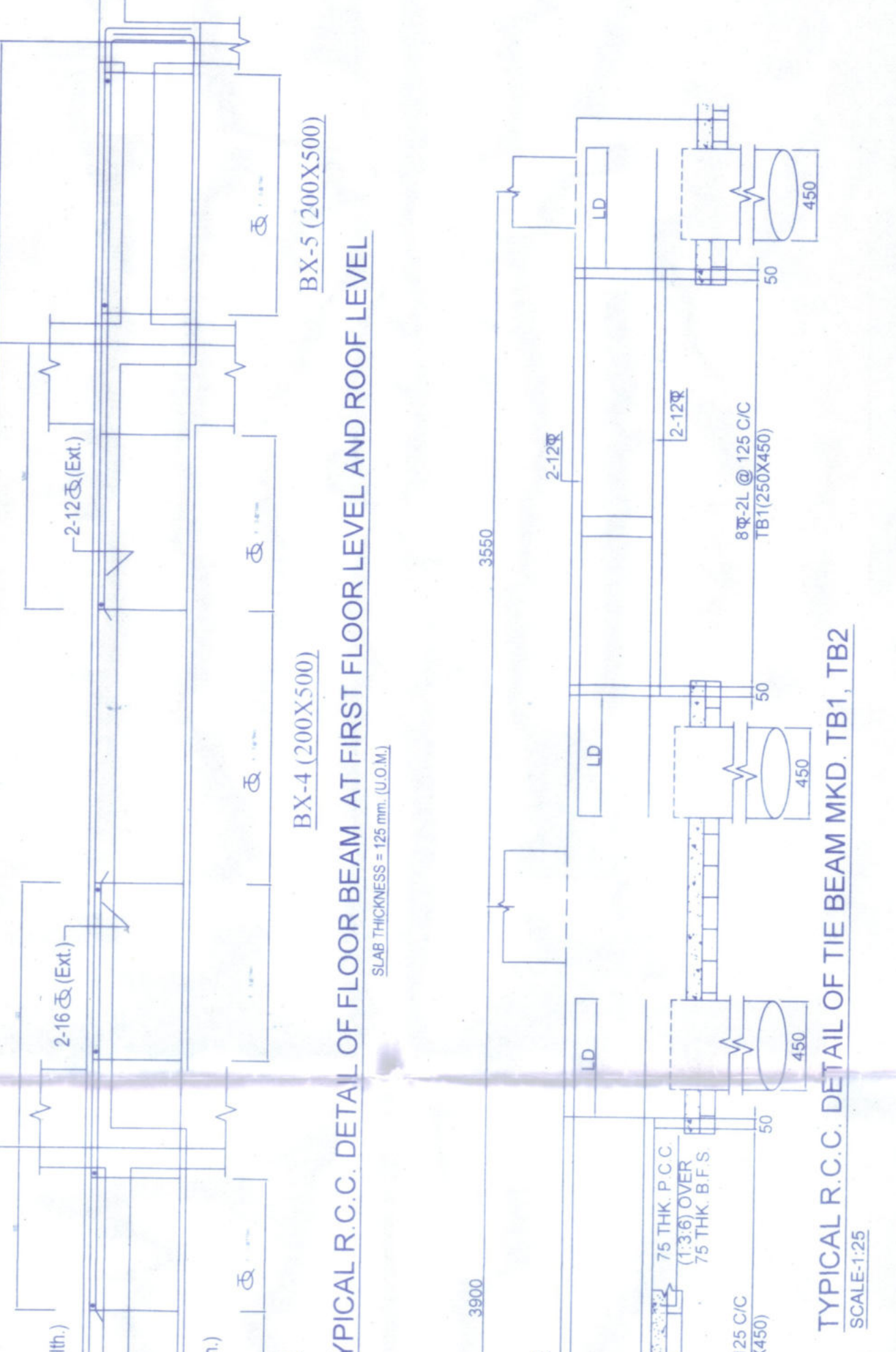
SITE PLAN



TIE BEAM LAYOUT PLAN



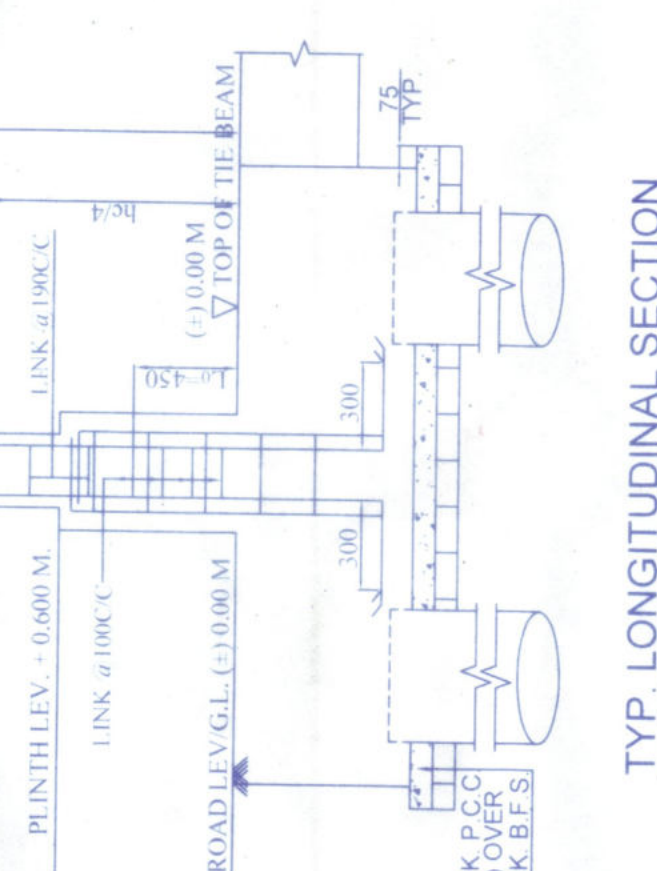
COLUMN LAYOUT PLAN



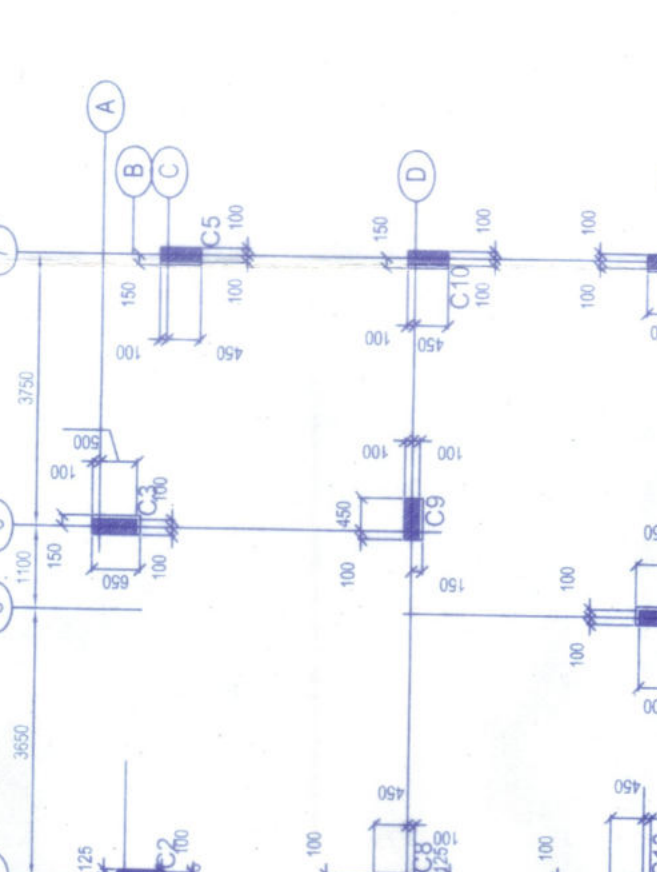
TYPICAL R.C.C. DETAIL OF FLOOR BEAM AT FIRST FLOOR LEVEL AND ROOF LEVEL

SCHEDULE OF COLUMN

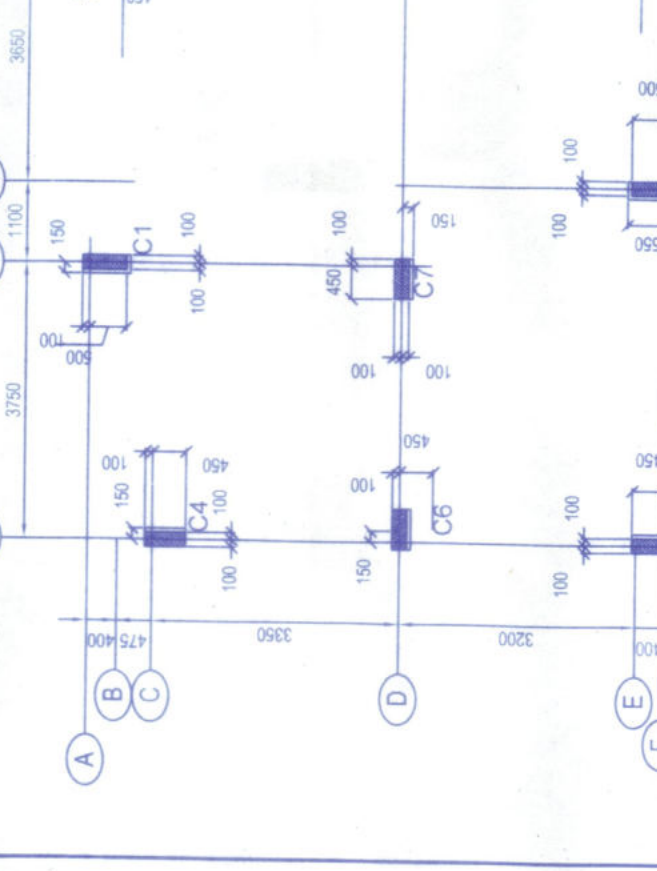
COL. NO.	COL. SIZE	NO. OF COLUMNS	REMARKS
1	300X300	1	AT CORNER
2	300X300	2	AT END
3	300X300	4	AT INTERIOR
4	300X300	4	AT INTERIOR
5	300X300	4	AT INTERIOR
6	300X300	4	AT INTERIOR
7	300X300	4	AT INTERIOR
8	300X300	4	AT INTERIOR
9	300X300	4	AT INTERIOR
10	300X300	4	AT INTERIOR
11	300X300	4	AT INTERIOR
12	300X300	4	AT INTERIOR
13	300X300	4	AT INTERIOR
14	300X300	4	AT INTERIOR
15	300X300	4	AT INTERIOR
16	300X300	4	AT INTERIOR
17	300X300	4	AT INTERIOR
18	300X300	4	AT INTERIOR
19	300X300	4	AT INTERIOR
20	300X300	4	AT INTERIOR
21	300X300	4	AT INTERIOR
22	300X300	4	AT INTERIOR
23	300X300	4	AT INTERIOR
24	300X300	4	AT INTERIOR
25	300X300	4	AT INTERIOR
26	300X300	4	AT INTERIOR
27	300X300	4	AT INTERIOR
28	300X300	4	AT INTERIOR
29	300X300	4	AT INTERIOR
30	300X300	4	AT INTERIOR
31	300X300	4	AT INTERIOR
32	300X300	4	AT INTERIOR
33	300X300	4	AT INTERIOR
34	300X300	4	AT INTERIOR
35	300X300	4	AT INTERIOR
36	300X300	4	AT INTERIOR
37	300X300	4	AT INTERIOR
38	300X300	4	AT INTERIOR
39	300X300	4	AT INTERIOR
40	300X300	4	AT INTERIOR
41	300X300	4	AT INTERIOR
42	300X300	4	AT INTERIOR
43	300X300	4	AT INTERIOR
44	300X300	4	AT INTERIOR
45	300X300	4	AT INTERIOR
46	300X300	4	AT INTERIOR
47	300X300	4	AT INTERIOR
48	300X300	4	AT INTERIOR
49	300X300	4	AT INTERIOR
50	300X300	4	AT INTERIOR



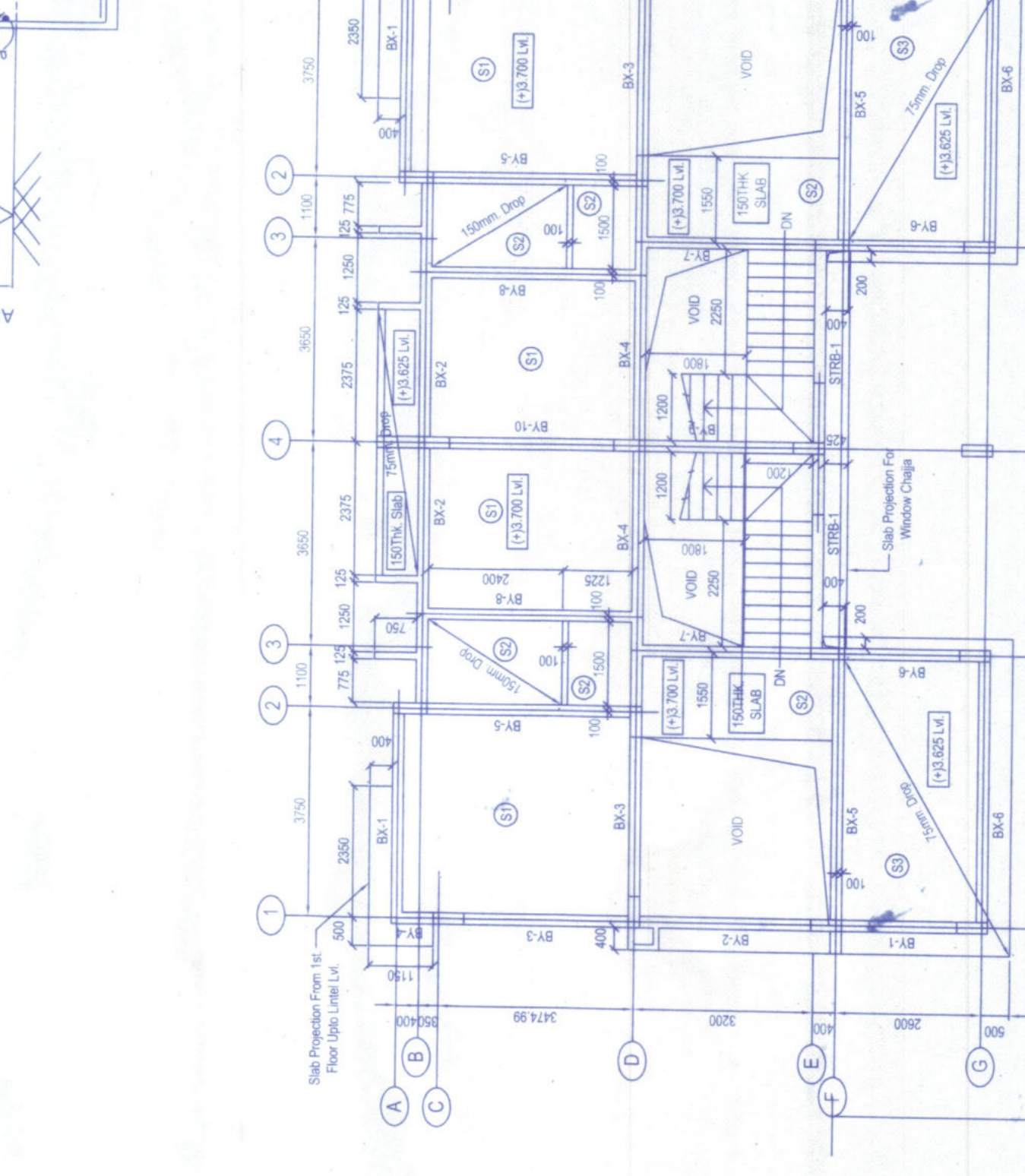
TYPICAL R.C.C. DETAIL OF TIE BEAM MKD TB1, TB2



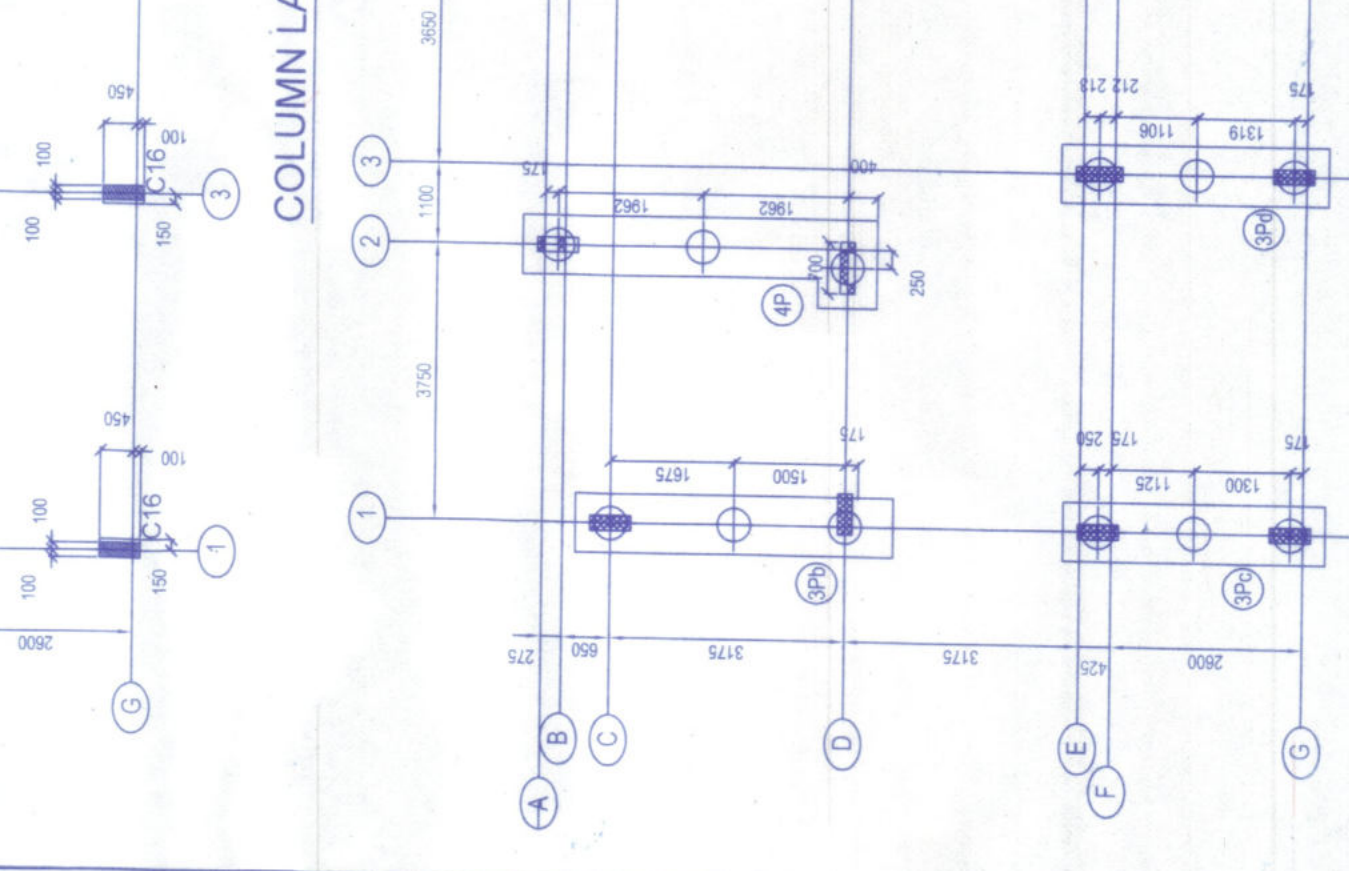
TYPICAL R.C.C. DETAIL OF STAIRCASE



TYPICAL R.C.C. DETAIL OF SLAB REINFORCEMENT



TYPICAL R.C.C. DETAIL OF SLAB REINFORCEMENT



TYPICAL R.C.C. DETAIL OF SLAB REINFORCEMENT

SCHEDULE OF SLAB

SLAB NO.	THICKNESS (MM)	REINFORCEMENT	REMARKS
S1	125	8@100CC	AT SPAN
S2	125	8@100CC	AT SPAN
S3	125	8@100CC	AT SPAN

SCHEDULE OF BEAM

BEAM NO.	COL. SIZE	TOP	BOT	STRS	REMARKS
BX-1 (200X300)	200X300	2-18	4-18	8@100CC	FLOOR BEAM
BX-2 (200X300)	200X300	2-18	4-18	8@100CC	FLOOR BEAM
BX-3 (200X300)	200X300	2-18	4-18	8@100CC	FLOOR BEAM
BX-4 (200X300)	200X300	2-18	4-18	8@100CC	FLOOR BEAM
BX-5 (200X300)	200X300	2-18	4-18	8@100CC	FLOOR BEAM
BX-6 (200X300)	200X300	2-18	4-18	8@100CC	FLOOR BEAM
BX-7 (200X300)	200X300	2-18	4-18	8@100CC	FLOOR BEAM
BX-8 (200X300)	200X300	2-18	4-18	8@100CC	FLOOR BEAM
BX-9 (200X300)	200X300	2-18	4-18	8@100CC	FLOOR BEAM
BX-10 (200X300)	200X300	2-18	4-18	8@100CC	FLOOR BEAM
BX-11 (200X300)	200X300	2-18	4-18	8@100CC	FLOOR BEAM
BX-12 (200X300)	200X300	2-18	4-18	8@100CC	FLOOR BEAM
BX-13 (200X300)	200X300	2-18	4-18	8@100CC	FLOOR BEAM
BX-14 (200X300)	200X300	2-18	4-18	8@100CC	FLOOR BEAM
BX-15 (200X300)	200X300	2-18	4-18	8@100CC	FLOOR BEAM
BX-16 (200X300)	200X300	2-18	4-18	8@100CC	FLOOR BEAM
BX-17 (200X300)	200X300	2-18	4-18	8@100CC	FLOOR BEAM
BX-18 (200X300)	200X300	2-18	4-18	8@100CC	FLOOR BEAM
BX-19 (200X300)	200X300	2-18	4-18	8@100CC	FLOOR BEAM
BX-20 (200X300)	200X300	2-18	4-18	8@100CC	FLOOR BEAM
BX-21 (200X300)	200X300	2-18	4-18	8@100CC	FLOOR BEAM
BX-22 (200X300)	200X300	2-18	4-18	8@100CC	FLOOR BEAM
BX-23 (200X300)	200X300	2-18	4-18	8@100CC	FLOOR BEAM
BX-24 (200X300)	200X300	2-18	4-18	8@100CC	FLOOR BEAM
BX-25 (200X300)	200X300	2-18	4-18	8@100CC	FLOOR BEAM
BX-26 (200X300)	200X300	2-18	4-18	8@100CC	FLOOR BEAM
BX-27 (200X300)	200X300	2-18	4-18	8@100CC	FLOOR BEAM
BX-28 (200X300)	200X300	2-18	4-18	8@100CC	FLOOR BEAM
BX-29 (200X300)	200X300	2-18	4-18	8@100CC	FLOOR BEAM
BX-30 (200X300)	200X300	2-18	4-18	8@100CC	FLOOR BEAM
BX-31 (200X300)	200X300	2-18	4-18	8@100CC	FLOOR BEAM
BX-32 (200X300)	200X300	2-18	4-18	8@100CC	FLOOR BEAM
BX-33 (200X300)	200X300	2-18	4-18	8@100CC	FLOOR BEAM
BX-34 (200X300)	200X300	2-18	4-18	8@100CC	FLOOR BEAM
BX-35 (200X300)	200X300	2-18	4-18	8@100CC	FLOOR BEAM
BX-36 (200X300)	200X300	2-18	4-18	8@100CC	FLOOR BEAM
BX-37 (200X300)	200X300	2-18	4-18	8@100CC	FLOOR BEAM
BX-38 (200X300)	200X300	2-18	4-18	8@100CC	FLOOR BEAM
BX-39 (200X300)	200X300	2-18	4-18	8@100CC	FLOOR BEAM
BX-40 (200X300)	200X300	2-18	4-18	8@100CC	FLOOR BEAM
BX-41 (200X300)	200X300	2-18	4-18	8@100CC	FLOOR BEAM
BX-42 (200X300)	200X300	2-18	4-18	8@100CC	FLOOR BEAM
BX-43 (200X300)	200X300	2-18	4-18	8@100CC	FLOOR BEAM
BX-44 (200X300)	200X300	2-18	4-18	8@100CC	FLOOR BEAM
BX-45 (200X300)	200X300	2-18	4-18	8@100CC	FLOOR BEAM
BX-46 (200X300)	200X300	2-18	4-18	8@100CC	FLOOR BEAM
BX-47 (200X300)	200X300	2-18	4-18	8@100CC	FLOOR BEAM
BX-48 (200X300)	200X300	2-18	4-18	8@100CC	FLOOR BEAM
BX-49 (200X300)	200X300	2-18	4-18	8@100CC	FLOOR BEAM
BX-50 (200X300)	200X300	2-18	4-18	8@100CC	FLOOR BEAM
BX-51 (200X300)	200X300	2-18	4-18	8@100CC	FLOOR BEAM
BX-52 (200X300)	200X300	2-18	4-18	8@100CC	FLOOR BEAM
BX-53 (200X300)	200X300	2-18	4-18	8@100CC	FLOOR BEAM
BX-54 (200X300)	200X300	2-18	4-18	8@100CC	FLOOR BEAM
BX-55 (200X300)	200X300	2-18	4-18	8@100CC	FLOOR BEAM
BX-56 (200X300)	200X300	2-18	4-18	8@100CC	FLOOR BEAM
BX-57 (200X300)	200X300	2-18	4-18	8@100CC	FLOOR BEAM
BX-58 (200X300)	200X300	2-18	4-18	8@100CC	FLOOR BEAM
BX-59 (200X300)	200X300	2-18	4-18	8@100CC	FLOOR BEAM
BX-60 (200X300)	200X300	2-18	4-18	8@100CC	FLOOR BEAM
BX-61 (200X300)	200X300	2-18	4-18	8@100CC	FLOOR BEAM
BX-62 (200X300)	200X300	2-18	4-18	8@100CC	FLOOR BEAM
BX-63 (200X300)	200X300	2-18	4-18	8@100CC	FLOOR BEAM
BX-64 (200X300)	200X300	2-18	4-18	8@100CC	FLOOR BEAM
BX-65 (200X300)	200X300	2-18	4-18	8@100CC	FLOOR BEAM
BX-66 (200X300)	200X300	2-18	4-18	8@100CC	FLOOR BEAM
BX-67 (200X300)	200X300	2-18	4-18	8@100CC	FLOOR BEAM
BX-68 (200X300)	200X300	2-18	4-18	8@100CC	FLOOR BEAM
BX-69 (200X300)	200X300	2-18	4-18	8@100CC	FLOOR BEAM
BX-70 (200X300)	200X300	2-18	4-18	8@100CC	FLOOR BEAM
BX-71 (200X300)	200X300	2-18	4-18	8@100CC	FLOOR BEAM
BX-72 (200X300)	200X300	2-18	4-18	8@100CC	FLOOR BEAM
BX-73 (200X300)	200X300	2-18	4-18	8@100CC	FLOOR BEAM
BX-74 (200X300)	200X300	2-18	4-18	8@100CC	FLOOR BEAM
BX-75 (200X300)	200X300	2-18	4-18	8@100CC	FLOOR BEAM
BX-76 (200X300)	200X300	2-18	4-18	8@100CC	FLOOR BEAM
BX-77 (200X300)	200X300	2-18	4-18	8@100CC	FLOOR BEAM
BX-78 (200X300)	200X300	2-18	4-18	8@100CC	FLOOR BEAM
BX-79 (200X300)	200X300	2-18	4-18	8@100CC	FLOOR BEAM
BX-80 (200X300)	200X300	2-18	4-18	8@100CC	FLOOR BEAM